



OHF Opportunities and Agency Perspectives

John Jaschke, Executive Director | Board of Water and Soil Resources

Sarah Strommen, Commissioner | Department of Natural Resources

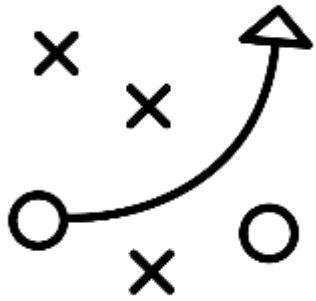
Lessard-Sams Outdoor Heritage Council | December 10, 2019



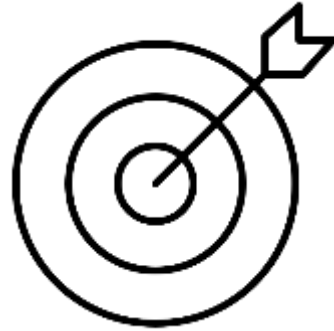
Council Invitation

- Thank you for inviting us!
- What you asked:
 - What should be the Council's priorities for future funding recommendations – should the Council be refining its funding priorities to more adequately impact a certain geographic area, type of habitat, type of project/practice, specific species, etc.?
 - What are your thoughts on OHF funding being appropriated to:
 - NGO partners for fee acquisitions of WMAs, SNAs, AMAs, etc.
 - Local SWCDs or WSDs for local/area projects

Agency Perspectives



Strategic



Targeted



Collaborative



Strategic

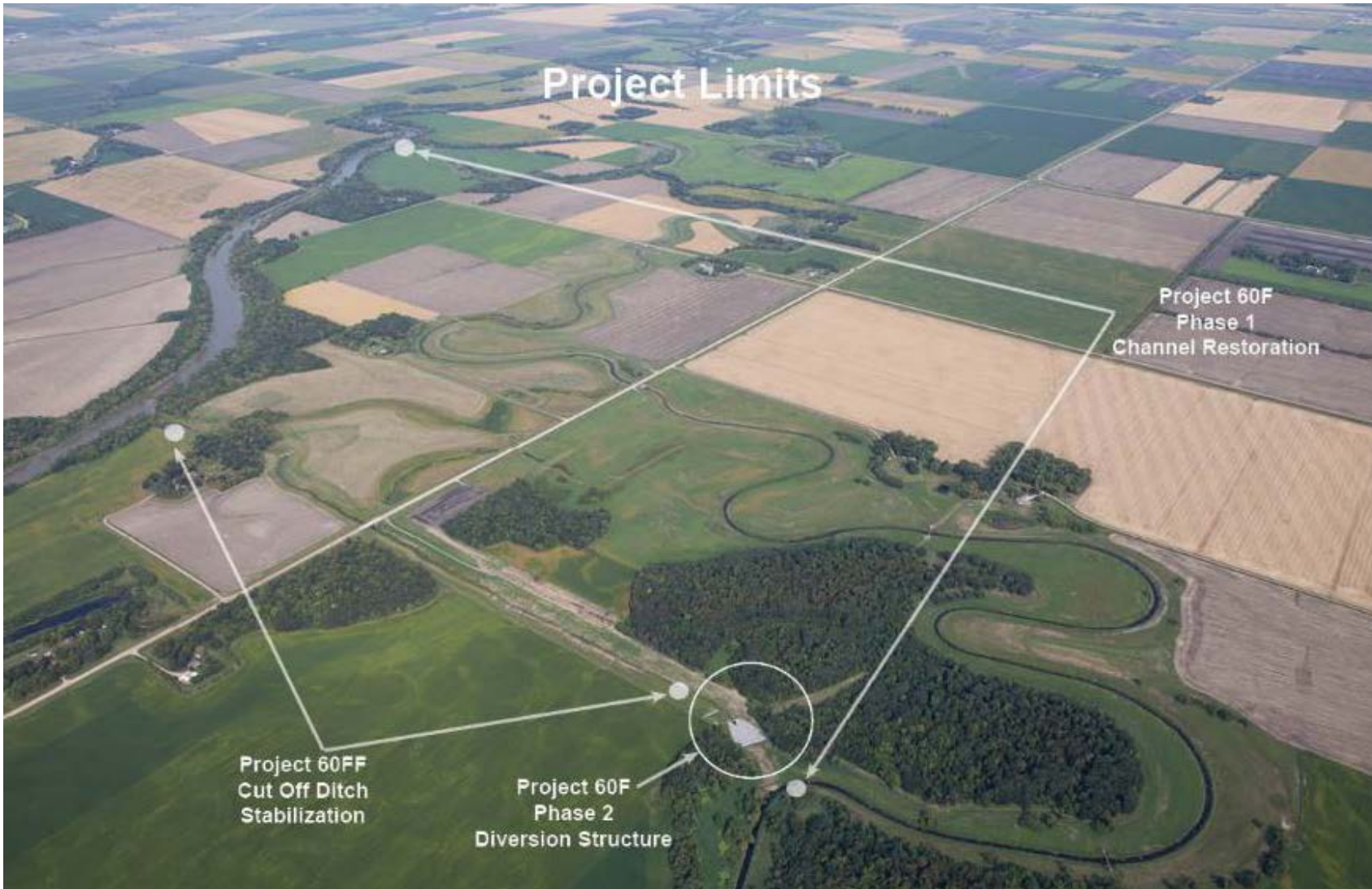
Why Strategic?

Prioritizing **strategic** project planning and implementation enables:

- Capturing multiple project co-benefits
- Leveraging funding opportunities
- Sustaining efforts with a programmatic approach
- Guidance by best available science

33 percent of the receipts shall be deposited in the **outdoor heritage fund** and may be spent only to restore, protect, and enhance wetlands, prairies, forests, and habitat for fish, game, and wildlife.

Project Example – Grand Marais Creek



Fall 2019 Water Storage Summary *(provided by RLWD)*

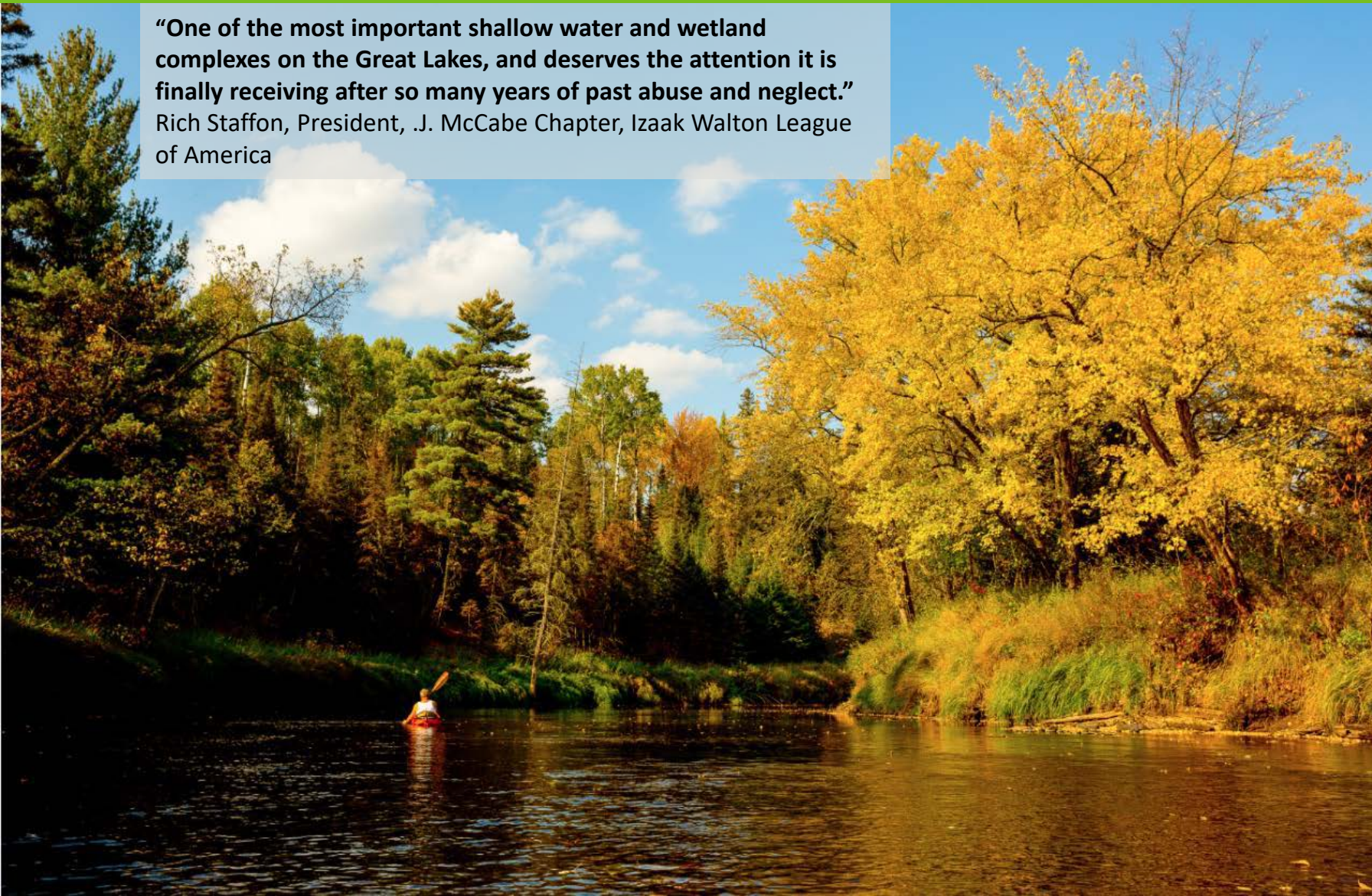
- Red Lake WD: 42,468 acre-feet, 66.36 square miles @ 1' in depth
- Agassiz NWR: 76,478 acre-feet, 119.50 square miles @ 1' in depth
- Thief Lake WMA: 33,000 acre-feet, 51.56 square miles @ 1' in depth

- Total = 151,946 acre-feet, 237.41 square miles @ 1' in depth.

Project Example – St. Louis River Restoration Initiative

“One of the most important shallow water and wetland complexes on the Great Lakes, and deserves the attention it is finally receiving after so many years of past abuse and neglect.”

Rich Staffon, President, .J. McCabe Chapter, Izaak Walton League of America



RESTORE

Productive, diverse habitat

RECOVER

Lost populations

SUPPORT

Lake Superior fisheries

IMPROVE

Sport fish populations

ENHANCE

A globally Important Bird Area

INCREASE

Access for all



Targeted

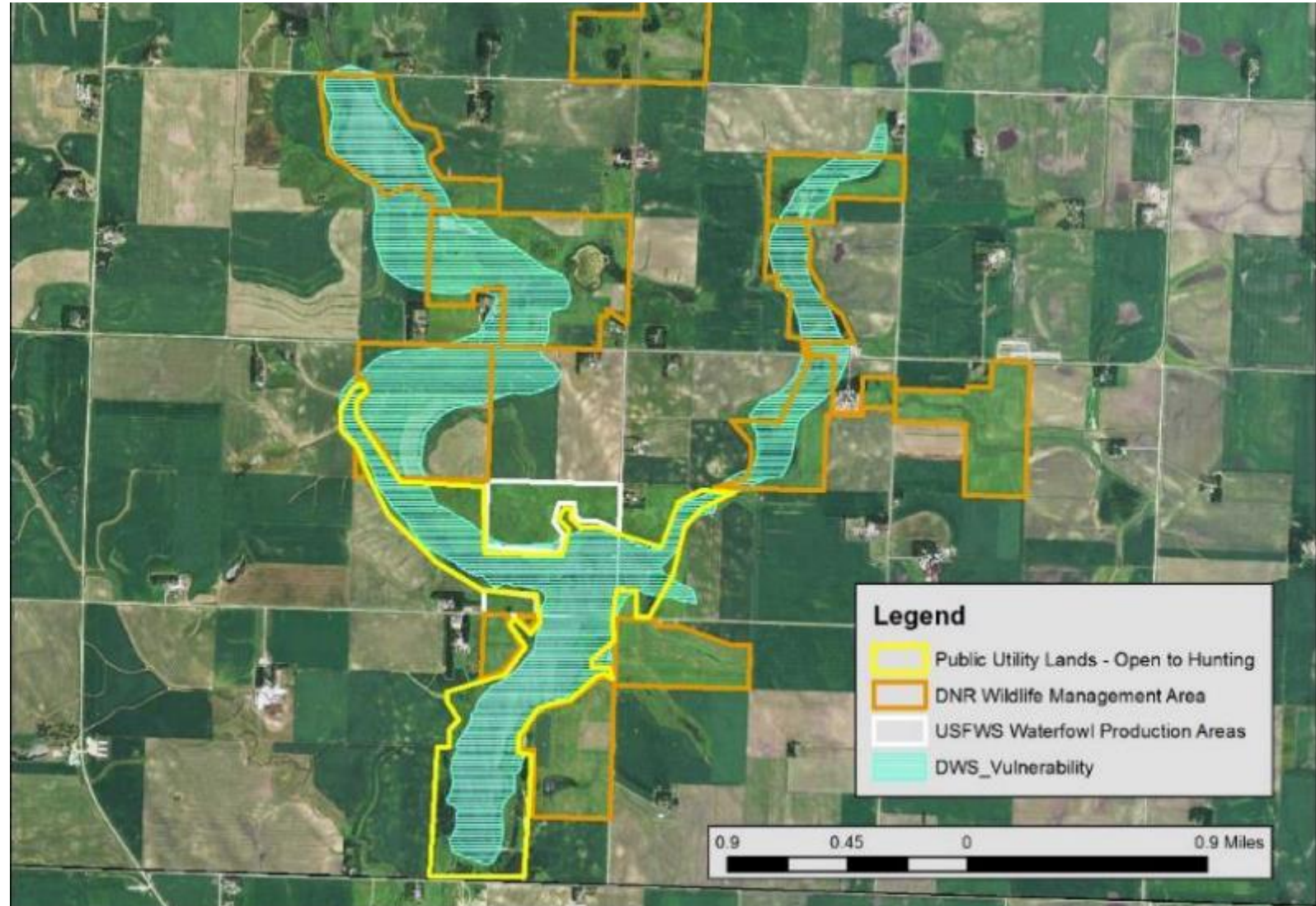
Prioritizing **targeted** project planning and implementation enables:

- Putting limited resources where they can do the most good
 - Directly for wildlife
 - Indirectly for ecosystem services
- Investing where we've invested previously – to build on past successes

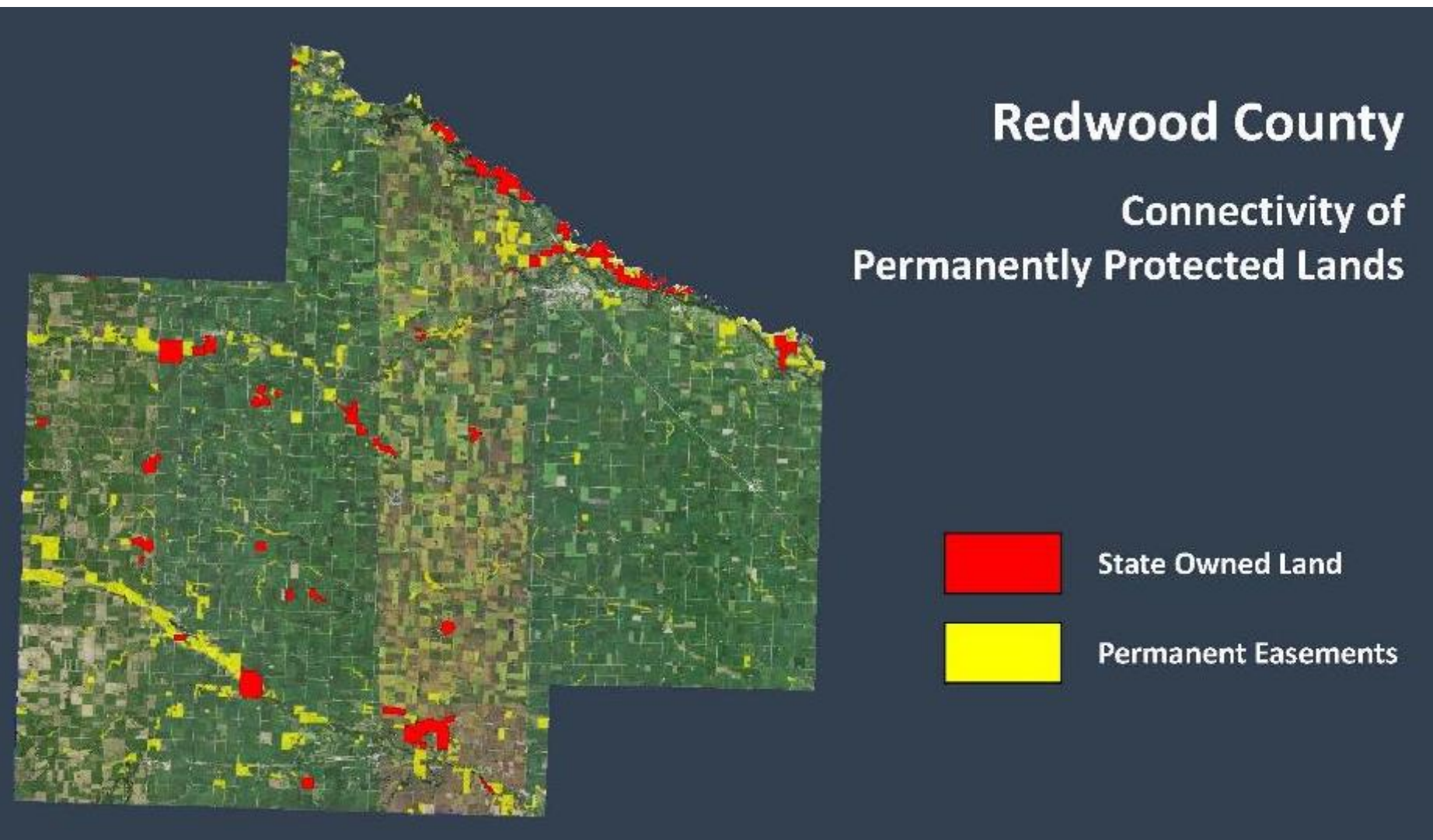
Project Example – Worthington Wells



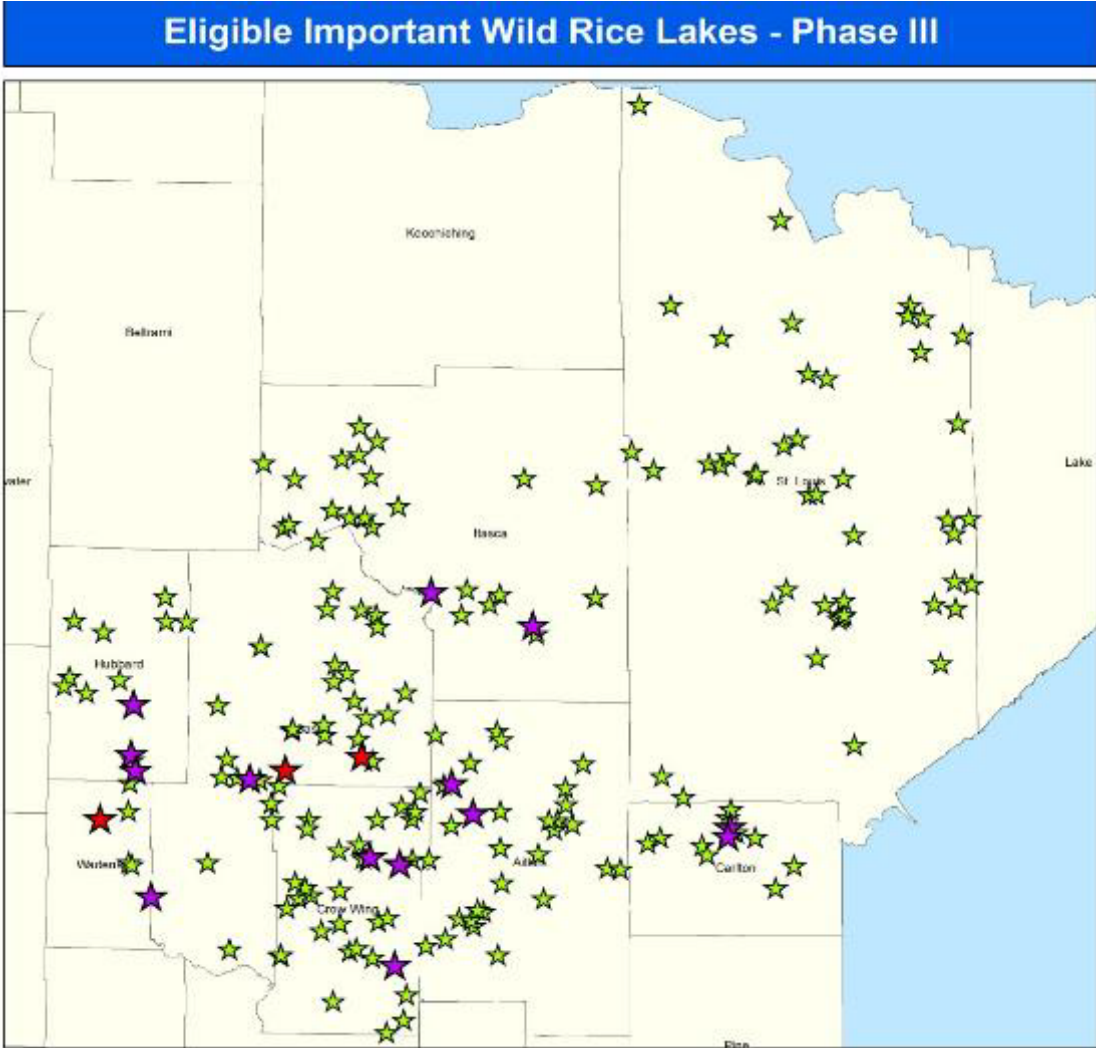
Targeted – Multi-benefit, Site-specific Example



Targeted – Locally-led Connectivity Example



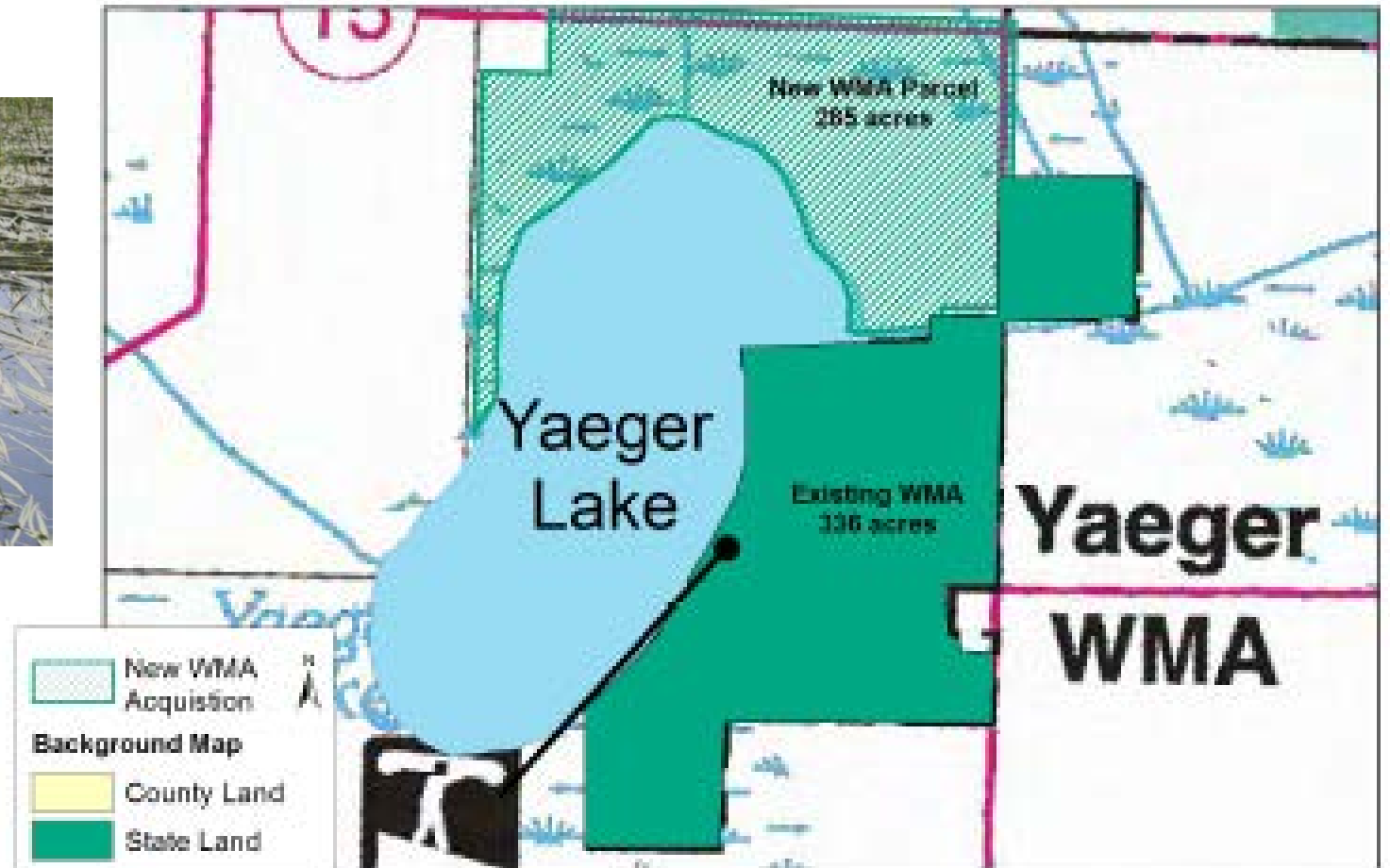
Project Example – Wild Rice Conservation Easement Program



Targeted – Multi-mechanism, Resource-specific Example



Wild Rice Lake Shoreland Protection Project - Phase I





Collaborative

Why Collaborative?

Prioritizing **collaborative** project planning and implementation enables:

- Tapping into what's most important for all Minnesotans
- Agencies and partners playing to our respective strengths
- Building support
- Greater involvement & engagement vs. agencies going it alone

Project Example – Camp Ripley Army Compatible Use Buffer



Project Example – Camp Ripley Army Compatible Use Buffer ⁽²⁾



Project Examples – Vermillion River Watershed JPO



Project Example – Big Rice Lake



Fond du Lac airboat cutting pickerelweed in 2012



Rice re-established after pickerelweed cutting in 2015

What we've learned, and looking forward

- Keep doing what you're doing!
- Agencies are strategic, targeted and collaborative
- Partnerships are integral
- Our work has made a difference
- We need to tell the story of how this work benefits all Minnesotans, looking forward to re-passage



Public Value



Habitat | Drinking Water | Recreation | Water Storage
Commerce | Resilient Landscapes

Success Stories

Brook trout rebound a surprise success from conservation efforts

Wholly dependent on very cold water, brook trout are perhaps Minnesota's most vulnerable finned species in the face of ever-warming temperatures.

Dennis Anderson @STRIBDENNIS

AUGUST 27, 2019 — 8:45PM



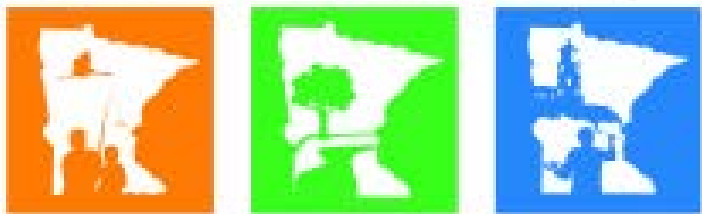
Success Stories – Indian Creek

- ...decades long population trend... brook trout have actually increased in number and size, not decreased, and that they've displaced brown trout.
- In the 1970s, 3 percent of southeast streams had brook trout. Today, 68 percent of streams in the same area have brook trout.
- The region's improved land conservation practices have contributed to the brook trout rebound by lowering stream-water temperatures.
- Contour planting, grass waterways and riparian buffer strips are increasingly deployed by the region's landowners to conserve soil and decrease runoff.
- Additionally, more of the region is forested than was a few decades ago.

2009-2034 Clean Water, Land and Legacy Amendment



VOTE YES



PROTECT THE MINNESOTA YOU LOVE

33 percent of the receipts shall be deposited in the **outdoor heritage fund** and may be spent only to restore, protect, and enhance wetlands, prairies, forests, and habitat for fish, game, and wildlife.